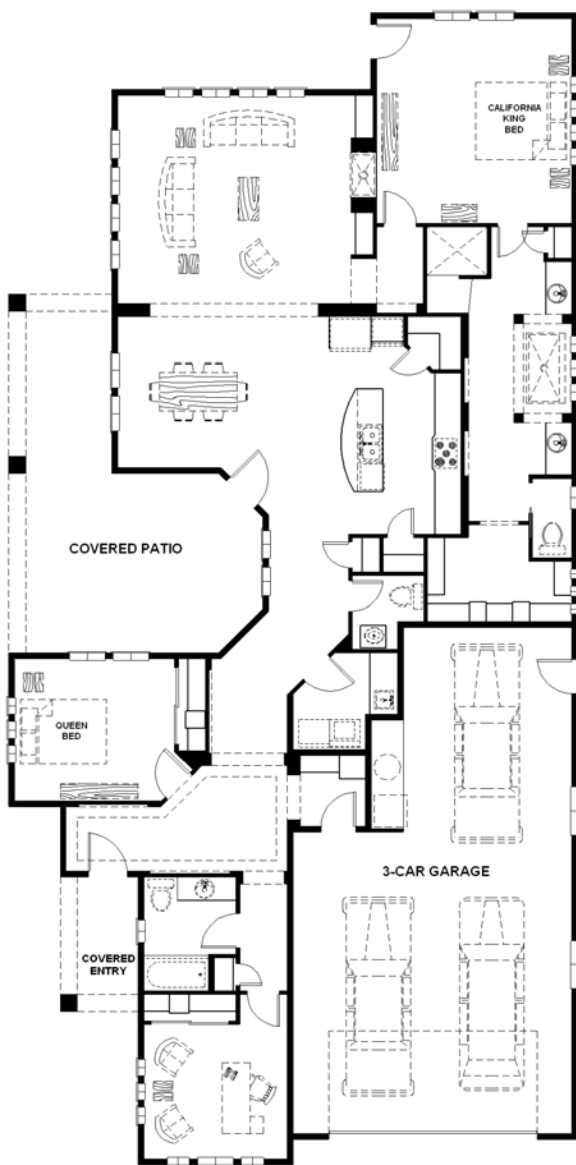




Munich



- 2252 SF
- 3-car garage
- 2-1/2 baths
- 3-bedrooms or 2-bed with den
- Designer kitchen with stainless steel appliances, built in micro wave and two wall oven, 5-burner gas cook top and elegant chimney hood range ventilation.
- Elegant master bed bath with walk-in shower, freestanding tub with his/hers vanities.
- Expansive and secluded covered patio and side entry porch.
- 13 ft ceiling at bedroom/den and 10ft ceiling at entry foyer.
- Built-in entertainment/book case at great room.



WWW.FMCIHOME.COM
License#: RCE-3442



For more information contact FMCI, Inc. office: 208.898.0689 e-mail: info@fmcihome.com
Floor plans, specifications, and pricing subject to change without notice Revised 6/12/2018