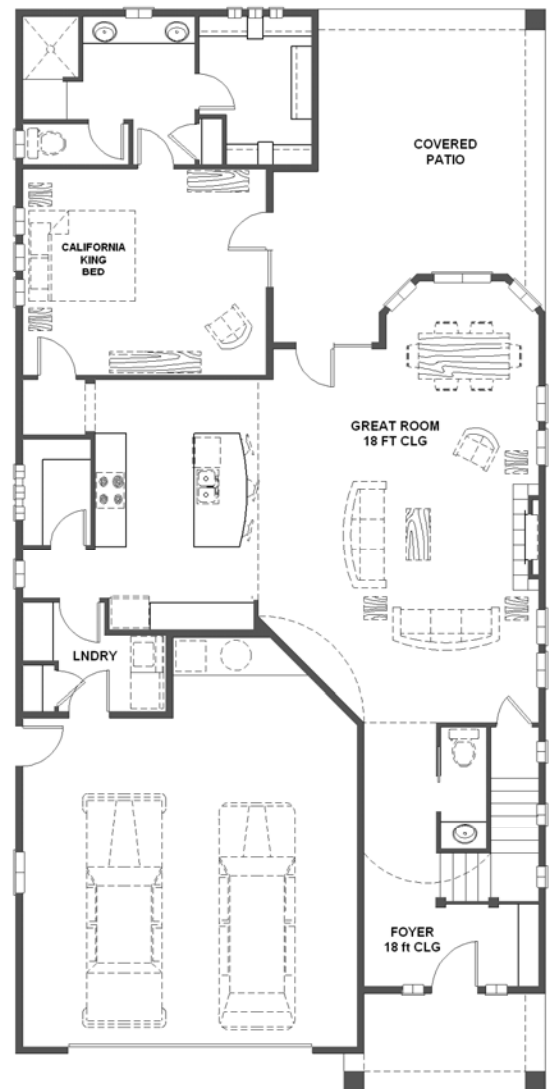
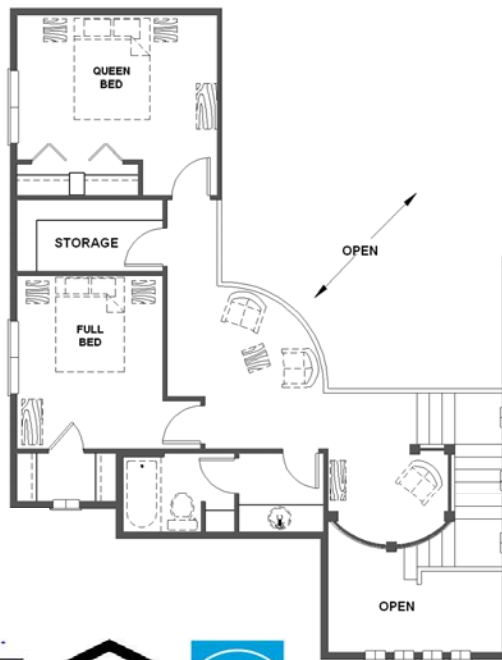




The Beechwood

- Dramatic 18 ft ceiling in Great Room & Foyer
- Spacious covered patio with convenient access off master suite and Great Room
- Open kitchen with large walk-in pantry
- Stunning entry foyer w/curved balconies above

- 2200 SF
- 2-car garage
- 3-bedrooms
- 2-1/2 baths
- Storage galore



WWW.FMCIHOME.COM
License#: RCE-3442



For more information contact FMCI, Inc. office: 208.898.0689 e-mail: info@fmcihome.com
Floor plans, specifications, and pricing subject to change without notice Revised 3/6/2015